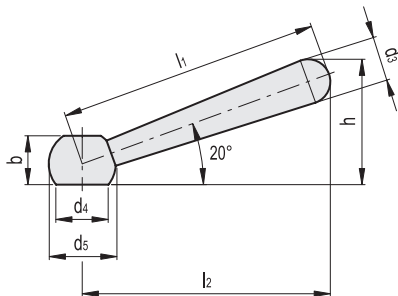


STANDARD EXECUTIONS

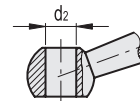
- **DIN 99-L:** turned and black-oxide steel, plain pass-through hole.
- **DIN 99-N:** turned and black-oxide steel, threaded pass-through hole.
- **DIN 99-L-NI:** AISI 303 stainless steel, sandblasted matte finish, plain pass-through hole.
- **DIN 99-N-NI:** AISI 303 stainless steel, sandblasted matte finish, threaded pass-through hole.



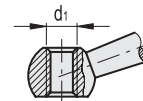
Conversion Table 1 mm = 0.039 inch	
l2	
mm	inch
48	1.89
60	2.36
76	2.99
95	3.74
119	4.68
152	5.98



DIN 99-L
DIN 99-L-NI



DIN 99-N
DIN 99-N-NI



DIN 99

METRIC

Code	Description	l1	l2	d2 H7	d1	h	d3	d4	d5-0.2	b	⚖
GN.10705	DIN 99-50-B6-L	50	48	6	-	24	8	7.5	12	9.5	17
GN.10715	DIN 99-63-B8-L	63	60	8	-	30	10	11	16	12	36
GN.10725	DIN 99-80-B10-L	80	76	10	-	38	13	15	20	14.5	74
GN.10735	DIN 99-100-B12-L	100	95	12	-	47	16	19	25	18.5	139
GN.10745	DIN 99-125-B16-L	125	119	16	-	59.5	20	23.5	32	24	283
GN.10755	DIN 99-160-B20-L	160	152	20	-	76	25	29.5	40	30	545
GN.10701	DIN 99-50-M6-N	50	48	-	M6	24	8	7.5	12	9.5	17
GN.10711	DIN 99-63-M8-N	63	60	-	M8	30	10	11	16	12	38
GN.10721	DIN 99-80-M10-N	80	76	-	M10	38	13	15	20	14.5	76
GN.10731	DIN 99-100-M12-N	100	95	-	M12	47	16	19	25	18.5	144
GN.10741	DIN 99-125-M16-N	125	119	-	M16	59.5	20	23.5	32	24	290
GN.10751	DIN 99-160-M20-N	160	152	-	M20	76	25	29.5	40	30	561

DIN 99-NI

INOX
STAINLESS
STEEL

METRIC

Code	Description	l1	l2	d2 H7	d1	h	d3	d4	d5-0.2	b	⚖
GN.10716	DIN 99-63-B8-L-NI	63	60	8	-	30	10	11	16	12	36
GN.10726	DIN 99-80-B10-L-NI	80	76	10	-	38	13	15	20	14.5	77
GN.10736	DIN 99-100-B12-L-NI	100	95	12	-	47	16	19	25	18.5	139
GN.10702	DIN 99-50-M6-N-NI	50	48	-	M6	24	8	7.5	12	9.5	16
GN.10712	DIN 99-63-M8-N-NI	63	60	-	M8	30	10	11	16	12	36
GN.10722	DIN 99-80-M10-N-NI	80	76	-	M10	38	13	15	20	14.5	76
GN.10732	DIN 99-100-M12-N-NI	100	95	-	M12	47	16	19	25	18.5	146
GN.10742	DIN 99-125-M16-N-NI	125	119	-	M16	59.5	20	23.5	32	24	283



Clamping levers